



# Grain Bins



Farm • Commercial • Hopper Bottom





# Innovative Ideas **LEADING** the Industry.

**Sukup Manufacturing Co.** has come a long way from its start in a welding shop in 1963. Companywide, Sukup now has over one million square feet of office and manufacturing space filled with the most advanced metal fabricating equipment. With over 80 patents, Sukup manufactures a full line of equipment for in-bin drying and storage, as well as dryers, farm and commercial grain bins, material handling equipment and steel buildings.

**Sukup continues to grow** thanks to the same innovative spirit that was its start over 50 years ago.

**No matter how much the company grows**, one thing stays the same - the personal touch that comes from a family-owned company.

**Being a family-owned company** with many long-term employees allows Sukup Manufacturing Co. to remain dedicated to our customers and providing them the best quality products and best value for the money.



## **The Bottom Line:**

### Top-of-the-Line Production Equipment

When Sukup began producing bins, we invested in the most technologically-advanced roll-forming equipment, built to our exacting standards, putting us decades ahead of the competition. We have continued to add to that equipment as our bin line has grown.

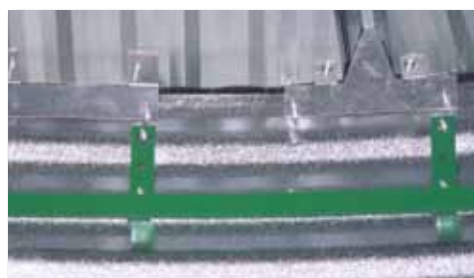
Our sidewall sheets start out as coils of flat American steel. Our machines form the corrugations, punch the bolt holes and create the curve in the sheets, all to our tight tolerances. Every major component of a Sukup Grain Bin starts out as blank steel that our dedicated employees use to create a top-quality finished product that they, and you, can be proud of.



## **Quick Assembly, Stand Up Strong: Sukup Sidewall Sheets**



You can have your transition openings pre-cut for your Sukup Fans at a nominal charge.



Sukup Bins can be pre-punched for Fastir® track.

Sukup's advanced roll-forming equipment and fixtures ensure close tolerances and high quality for the best fitting bin on the market.

- The precision-engineered, 4" wide corrugated, high-strength, galvanized steel sidewall sheets provide better vertical load carrying capacity.
- 4" wide corrugations also create less resistance and friction to allow grain to flow more easily.
- Sukup has streamlined bin erection by producing sidewall sheets with bolt holes that align properly, and also by pre-punching sheets for flashing, bolt-on base angle and Fastir stirring machine track (all optional and at no charge).

## The Little Things Matter... A Lot

Sukup's dedication to quality doesn't stop with the "big things". We obsess over the little things, like bolts, too.

- Bolts on Sukup Grain Bins are SAE Grade 8.2 (highest standard in the industry) with JS500 or better plating.
- Polyethylene washers are used on the bolts that join the sidewall sheets to form a weather-tight bond.
- All vertical seams are bolted in the peak and valley. Flange nuts increase the connection strength and form a tighter seal.



Bolt Grade	Proof Load (psi)	Yield Strength (psi)	Tensile Strength (psi)
<b>8.2 (Sukup)</b>	<b>120,000</b>	<b>130,000</b>	<b>150,000</b>
5	85,000	92,000	120,000
2	55,000	57,000	74,000

## Rolled Flange or Base Angle

Most Sukup Farm Bins are available with either a rolled flange bottom sheet or bolt-on base angle.



Rolled Flange



Base Angle

## Built to Last: Serrated Flange Nuts

Sukup uses serrated flange nuts to join and secure the roof panels.

- The flanges make erection quicker and easier.
- Serrations grip the roof surface and prevent the nut from working loose.



## Holding Strong: Exclusive Anchor Bracket

As with many other aspects of our bins, Sukup has taken the anchor bracket to a new level.

- The Sukup anchor bracket is 22" high to extend above the plenum area, and serves as a short stiffener.
- Extending the bracket reduces the stresses caused by vertical loads on the sidewall sheets at the bottom ring.
- Patented design allows them to be reversed for use with either bolt-on base angle or rolled flange.
- Two-piece, channel-shape, L-bracket transfers vertical load directly to the concrete foundation, preventing damage to the bracket and/or bottom bin sheet.
- The exclusive bracket also prevents vertical and horizontal movement of the bottom sidewall sheets.





## ***At the Top:*** Sukup Roof Rungs & Ladders

All Sukup Bins are equipped with eave-to-peak roof ladder rungs.

Inside and outside ladders are needed for your safety and are available to your preference.

Handrails are continuous and rungs are securely fastened so they can't turn and sealed, eliminating the need for plugs.

Rungs have a rounded design, eliminating sharp edges.



Steps around the perimeter of the fill hole increase safety and convenience when working around the top of the bin.

Cages are available for outside ladders for increased safety.

Manhole access platforms, landing platforms and stairs are also available.



## ***A Step Up:*** Sukup Bin Step

The Sukup bin step (included standard) is made from heavy-gauge galvanized steel with a special non-slip surface that does not hold water, providing sure footing no matter what the weather.

The bin step is notched to fit around Sukup anchor brackets, ensuring proper placement and a good fit.





## ***Sukup Bin Doors:*** Strong & Versatile



- Sukup offers two bin door designs - a 66" door and a 44" door for bins with 8 rings or more. Check with your dealer for details on which doors are available on your Sukup Bin.
- Both doors are made of heavy-gauge, galvanized steel and are factory-assembled for a good fit and seal.
- Sukup Bin doors feature a reversible hinge that allows the door to open to the left or right, whichever works best for your system.
- The top and bottom latches on the outer door are connected for one-hand operation.



## ***On the Inside:*** Inner Bin Door

- Sukup has designed a truly convenient inner bin door.
- There are no tie-bars to contend with.
- Door hinges are specially designed to swing open a full 180° to rest flat against the sidewall.
- The door latch allows single-handed operation and provides plenty of room for hands and knuckles during operation.
- The Hammer Head™ latches ensure easy opening of the doors.
- Hinge adjustments allow you to maintain a good inner door seal.



U.S. Patent #8,123,260



## Extra-Strong Farm Roof: 5000 lb.

Sukup has designed our 15' - 48' diameter bins with a rating of 5000 lbs., evenly distributed on peak ring as pure vertical peak load with uniformly distributed roof snow load calculated from **40 psf ground snow zone** or 90 mph wind zone as defined by ASCE7-05 Code (for comparison, this is equivalent to a 12,000 lb. vertical load if based on 30 psf ground snow zone with a 36' bin). An optional 8000 lb. roof is available on 42' and 48' bins.

The strength of Sukup roofs starts with high-strength steel. Each roof sheet is then rigidized every 4" to increase the stiffness of the panels, making them easier to handle.

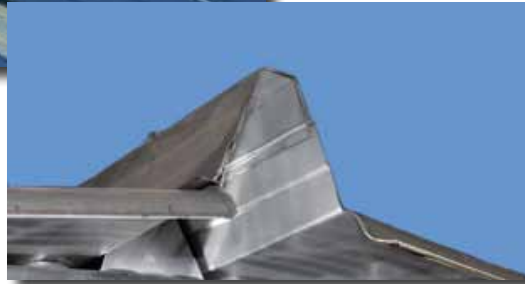
- 3" ribs serve as rafters for the roof structure, thereby strengthening the sheets.
- The bends on each side of the ribs further increase strength, allowing Sukup roofs to withstand heavy snow loads and high winds.
- The upper (overlapping) ribs are slightly larger than the lower, allowing the sheets to completely overlap and nest properly. Sukup takes the extra step of using two different size rollers to make the ribs on our roof sheets.

# Sukup Bin Roofs



US Patent # 7,654,048

*Roof rings are standard on Sukup Bins 18' and larger. Exclusive, patented roof ring clips ensure that roof rings stay in place for years to come.*



*The lower ribs on Sukup roofs are slightly smaller than the upper to allow the sheets to nest properly and create a tighter seal than other roofs. Our extra-tall 3" ribs serve as rafters, strengthening our roof sheets. The **hemmed edge** eliminates sharp edges and increases strength of roof sheet.*

## Powerful Support:

### Roof to Sidewall Connection

Sukup has the strongest roof-to-sidewall connections in the industry.

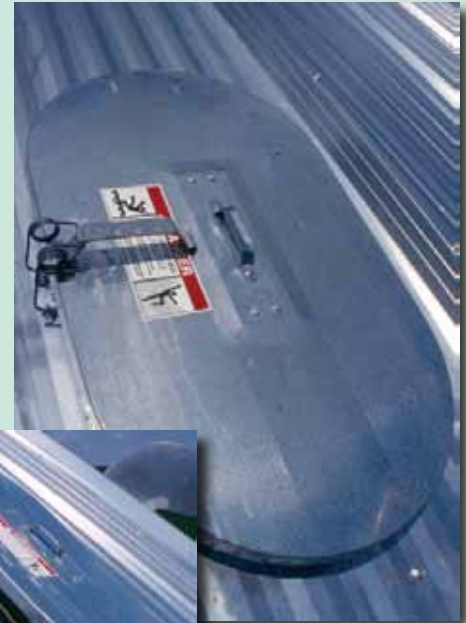
- With Sukup's standard double-tab roof clips, sheets are supported every 9 <sup>3</sup>/<sub>8</sub>" at the eave.
- Optional continuous eave clips are available for even greater strength.
- Optional continuous eave vent (right) provides the same strength as our regular continuous eave clip, but adds open area, reducing the number of roof vents required.



## Man-Sized Access: Larger Manhole

Sukup designed our bin roofs with a larger manhole - an oval opening that measures 20" x 35.5" - making it a comfortable fit for most operators.

- Allows over 5 ft<sup>2</sup> of air exhaust area.
- A formed lip and rubber gasket keep rain and snow out of the bin.
- The cover fits securely over the lip, preventing any moisture leakage.
- Special latches hold the manhole cover firmly in place. The latches can be easily released from the ladder side.
- When open, the door lays flat against the roof, eliminating the mess of water and soggy fines.



*Fines and water  
won't collect  
in lid!*

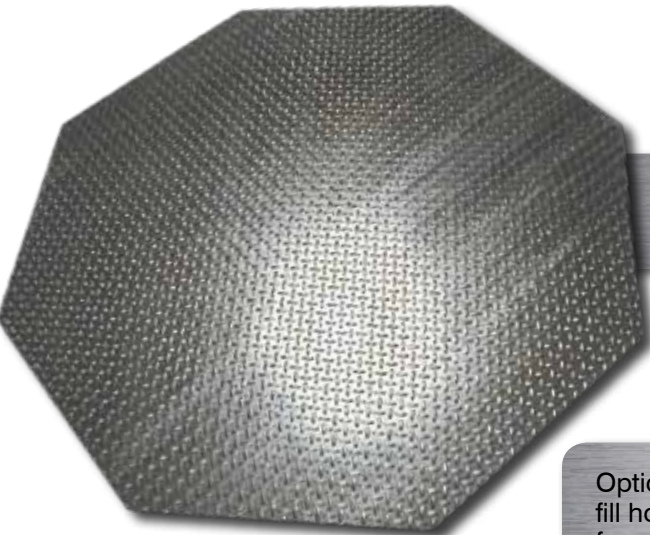
## Opening Innovations:

### Extra-Large, Extra-Strong Fill Hole

The fill hole on a Sukup Bin is an extra-large 38", providing approximately 8ft<sup>2</sup> of air exhaust area.



The domed fill hole cap is mounted on steel rods to allow it to slide open and closed and prevent it from being thrown around on windy days.



Optional 60" octagonal diamond deck lid may be used in place of the domed lid.

Optional remote lid opener allows the fill hole cap to be opened from the ground.







## Proper Ventilation: Sukup Roof Vents

True to our mission to provide the greatest value for your money, Sukup has developed a roof vent that not only does the job of releasing moisture from the bin, but it also protects the bin roof.

Sukup's exclusive (patent pending) 18" poly vents are virtually indestructible.

Debris deflectors prevent dirt, fines and other trash from collecting behind the vent.



Sukup roof sheets can be pre-punched for 18" roof vents. Pre-punching produces an extra-tall ( $1\frac{1}{8}$ " ) lip that works as a barrier, preventing moisture from leaking into the bin through the opening.

Tapered poly vent is also available. The tapered vent fits close to the peak, releasing more moisture during the drying process and reducing the amount of moisture deposited on the upper portion of the grain during cooling. Used in conjunction with standard 18" vents.



### **DANGER! DO NOT ENTER BIN!**

#### **Keep Clear of All Augers**

If you must enter the bin:

- Shut off and lock out all power.
  - Use a safety harness and safety line.
  - Station another person outside bin.
  - Avoid the center of the bin.
  - Wear proper breathing equipment or respirator.
  - Follow all applicable safety regulations.
  - Purchase ladder and safety cages and use a safety harness.
  - Maintain a secure hand and foot hold when climbing.
  - Metal is slippery when wet.
  - To avoid falls, never carry items while climbing on bin.
- Failure to heed these warnings may result in serious injury or death.**



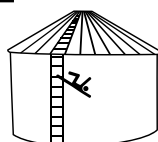
Rotating flighting will kill or dismember.



Crusted material will collapse and suffocate.



Flowing material will trap and suffocate.





## No One Knows Drying Like Sukup

For over 50 years Sukup has been making grain drying more efficient and profitable. We have the equipment to do the job, and do it right, including bins designed for the stresses of in-bin drying.

Our standard stiffened and non-stiffened bins are designed for stir drying with 3 or fewer down auger stirring machines. If you're using a continuous flow drying system with a horizontal bottom unload, a top dry system, a recirculator system with a center, vertical unload or a stirring machine with 4 or more down augers, a Sukup Heavy Gauge Drying Bin is the bin you need. Sukup Heavy Gauge Drying Bins were specifically-designed for the demands of these in-bin continuous flow drying systems.

The 32° pitch on Sukup Bin Roofs allows moisture to drain off easily.

Sukup Heavy Gauge Drying Bins are available 5 and 6 rings high, stiffened or non-stiffened, available for stirring; 7 rings available stiffened only, not available for stirring.

# of Rings	Eave Ht.	Available Diameter
5	18'5"	15'-48'
6	22'1"	15'-48'
7	25'9"	15'-48'

# Sukup Drying Bins



### ***The Leader in the Field***

Sukup has been the leader in fans and heaters for grain drying for decades. Why? Because Sukup Fans are #1 in airflow and Sukup heaters produce the most heat possible from the fuel consumed, resulting in clean, efficient drying.



### ***Sukup also leads the way in unloading equipment.***

The Sukup Sweepway® features fast, safe unloading. The Sweepway® is permanently installed in the bin and all controls are located outside, so there's no need to enter the bin.



### ***Complete Stirring for Even Drying: Fastir® Plus***

The Sukup Fastir® Plus with its patented mechanical reversing system is simply the most dependable stirring machine available. And, the constant pitch down augers move more grain for more even moisture content and less overdrying. A stationary outside auger on the Fastir® Plus ensures complete stirring around the outside portion of the bin, where a large portion of the grain is located.

# Drying Bin Specifications

Dia.	Rings	Max. Cap. Bu.	Level Cap. Bu.	Max Cap. w/ plenum	Level Cap. w/ plenum	Eave Ht.	Peak Ht.
<b>15'</b>	3	1848	1651	1693 bu.	1496 bu.	11'1"	15'6"
	4	2395	2198	2239	2042	14'9"	19'2"
	5	2941	2744	2786	2589	18'5"	22'10"
	6	3487	3290	3332	3135	22'1"	26'6"
	7	4033	3836	3878	3681	25'9"	30'2"
	8	4580	4383	4425	4228	29'5"	33'10"
	9	5126	4929	4971	4774	33'1"	37'6"
	10	5672	5475	5517	5320	36'9"	41'2"
	11	6219	6022	6063	5866	40'5"	44'10"
	12	6765	6568	6610	6413	44'1"	48'6"
<b>18'</b>	3	2718	2378	2495	2154	11'1"	16'5"
	4	3505	3165	3281	2941	14'9"	20'1"
	5	4292	3951	4068	3728	18'5"	23'9"
	6	5078	4738	4855	4514	22'1"	27'5"
	7	5865	5525	5641	5301	25'9"	31'1"
	8	6652	6311	6428	6088	29'5"	34'9"
	9	7438	7098	7215	6874	33'1"	38'5"
	10	8225	7885	8001	7661	36'9"	42'1"
	11	9012	8671	8788	8448	40'5"	45'9"
	12	9798	9458	9575	9234	44'1"	49'5"
<b>21'</b>	3	3777	3237	3473	2932	11'1"	17'4"
	4	4848	4307	4544	4003	14'9"	21'
	5	5919	5378	5614	5074	18'5"	24'8"
	6	6989	6449	6685	6145	22'1"	28'4"
	7	8060	7520	7756	7215	25'9"	32'
	8	9131	8590	8827	8286	29'5"	35'8"
	9	10,202	9661	9897	9357	33'1"	39'4"
	10	11,272	10,732	10,968	10,428	36'9"	43'
	11	12,343	11,802	12,039	11,498	40'5"	46'8"
	12	13,414	12,873	13,110	12,569	44'1"	50'4"
<b>24'</b>	3	5034	4227	4637	3830	11'1"	18'3"
	4	6433	5626	6035	5229	14'9"	21'11"
	5	7831	7024	7434	6627	18'5"	25'7"
	6	9230	8423	8833	8026	22'1"	29'3"
	7	10,628	9821	10,231	9424	25'9"	32'11"
	8	12,027	11,220	11,630	10,823	29'5"	36'7"
	9	13,425	12,618	13,028	12,221	33'1"	40'3"
	10	14,824	14,017	14,427	13,620	36'9"	43'11"
	11	16,222	15,416	15,825	15,018	40'5"	47'7"
	12	17,621	16,814	17,224	16,417	44'1"	51'3"
<b>27'</b>	3	6499	5350	5996	4847	11'1"	19'3"
	4	8269	7120	7766	6617	14'9"	22'11"
	5	10,039	8890	9536	8387	18'5"	26'7"
	6	11,809	10,660	11,306	10,157	22'1"	30'3"
	7	13,579	12,430	13,076	11,927	25'9"	33'11"
	8	15,349	14,200	14,846	13,697	29'5"	37'7"
	9	17,119	15,970	16,616	15,467	33'1"	41'3"
	10	18,889	17,740	18,386	17,237	36'9"	44'11"
	11	20,659	19,510	20,156	19,007	40'5"	48'7"
	12	22,429	21,280	21,926	20,777	44'1"	52'3"
<b>30'</b>	3	8181	6605	7560	5984	11'1"	20'2"
	4	10,366	8790	9746	8170	14'9"	23'10"
	5	12,552	10,976	11,931	10,355	18'5"	27'6"
	6	14,737	13,161	14,116	12,540	22'1"	31'2"
	7	16,922	15,346	16,301	14,725	25'9"	34'10"
	8	19,107	17,531	18,486	16,910	29'5"	38'6"
	9	21,292	19,716	20,672	19,096	33'1"	42'2"
	10	23,478	21,902	22,857	21,281	36'9"	45'10"
	11	25,663	24,087	25,042	23,466	40'5"	49'6"
	12	27,848	26,272	27,227	25,651	44'1"	53'2"

Dia.	Rings	Max. Cap. Bu.	Level Cap. Bu.	Max Cap. w/ plenum	Level Cap. w/ plenum	Eave Ht.	Peak Ht.
<b>33'</b>	3	10,090	7992	9339 Bu.	7241 Bu.	11'1"	21'1"
	4	12,734	10,636	11,983	9885	14'9"	24'9"
	5	15,378	13,280	14,627	12,529	18'5"	28'5"
	6	18,022	15,925	17,270	15,173	22'1"	32'1"
	7	20,666	18,569	19,914	17,817	25'9"	35'9"
	8	23,310	21,213	22,559	20,462	29'5"	39'5"
	9	25,954	23,857	25,203	23,106	33'1"	43'1"
	10	28,598	26,501	27,847	25,750	36'9"	46'9"
	11	31,243	29,145	30,491	28,394	40'5"	50'5"
	12	33,887	31,789	33,135	31,038	44'1"	54'1"
<b>36'</b>	3	12,235	9512	11,341	8618	11'1"	22'
	4	15,381	12,658	14,488	11,764	14'9"	25'8"
	5	18,528	15,805	17,634	14,911	18'5"	29'4"
	6	21,675	18,952	20,781	18,058	22'1"	33'
	7	24,822	22,098	23,928	21,204	25'9"	36'8"
	8	27,968	25,245	27,074	24,351	29'5"	40'4"
	9	31,115	28,392	30,221	27,498	33'1"	44'
	10	34,262	31,538	33,368	30,644	36'9"	47'8"
	11	37,408	34,685	36,514	33,791	40'5"	51'4"
	12	40,555	37,832	39,661	36,938	44'1"	55'
<b>42'</b>	3	17,271	12,946	16,054	11,729	11'1"	23'11"
	4	21,554	17,229	20,337	16,012	14'9"	27'7"
	5	25,837	21,512	24,620	20,295	18'5"	31'3"
	6	30,120	25,795	28,903	24,578	22'1"	34'11"
	7	34,403	30,078	33,186	28,861	25'9"	38'7"
	8	38,686	34,361	37,469	33,144	29'5"	42'3"
	9	42,696	38,644	41,752	37,427	33'1"	45'11"
	10	47,252	42,927	46,035	41,710	36'9"	49'7"
	11	51,534	47,210	50,318	45,993	40'5"	53'3"
	12	55,817	51,493	54,601	50,276	44'1"	56'11"
<b>48'</b>	3	23,365	16,909	21,775	15,320	11'1"	25'9"
	4	28,959	22,503	27,369	20,914	14'9"	29'5"
	5	34,553	28,098	32,964	26,508	18'5"	33'1"
	6	40,147	33,692	38,558	32,102	22'1"	36'9"
	7	45,741	39,286	44,152	37,696	25'9"	40'5"
	8	51,335	44,880	49,746	43,291	29'5"	44'1"
	9	56,929	50,474	55,340	48,885	33'1"	47'9"
	10	62,523	56,068	60,934	54,479	36'9"	51'5"
	11	68,117	61,662	66,528	60,073	40'5"	55'1"
	12	73,711	67,256	72,122	65,667	44'1"	58'9"

Sukup Manufacturing Co. provides this information to assist you in choosing the optimal equipment for your situation. Sukup specifications should be used only as estimates, and not as a warranty, express or implied, of how a particular Sukup unit will perform under your varying operating conditions. Because we are continuously improving Sukup products, changes may occur that may not be reflected in the specifications.

Max. capacities are based on ASABE Standard S413.1 - bins with no plenum and grain peaked at 28° angle of repose with 6% compaction.

Plenum height calculated at 12.5".

Figures shown in black apply to all Sukup Farm Bins. Figures shown in green apply only to Sukup Stiffened Farm Bins.







# Sukup Stiffened Farm Bins

Sukup offers a full line of bins to meet the needs of virtually any grain operation. The chart below may be used as a selection tool. Of course, your local Sukup dealer is your best resource for developing the ideal system to meet your needs.

		Application							
Type	Bin	Storage/ Aeration	Drying	Stirring Machine	Cooling	Short-term Wet Holding	General Wet Holding	Working	Side Draw
FARM	B	✓	Limited	Limited	✓	✓	✗	✗	✗
	BD	✓	✓	✓	✓	✓	✓	✓	✗
	BS	✓	Limited	Limited	✓	✓	✗	✗	✗
	BSD	✓	✓	✓	✓	✓	✓	✓	✗
HOPPER	BHM	✓	✗	✗	✗	✓	✗	Limited	✗
	BH	✓	✗	✗	✗	✓	SQ	Limited	SQ
COMMERCIAL	BC	✓	✗	✗	✗	Limited	SQ	SQ	✓*

B - Farm Bins  
BD - Farm Heavy Gauge Drying Bins  
BS - Farm Stiffened Bins  
BSD - Farm Stiffened Heavy Gauge Drying Bins  
BHM - Medium Duty Hopper Bins  
BH - Heavy Duty Hopper Bins  
BC - Commercial Bins

✓	Designed for this application	✗	NOT designed for this application	Limited	Limited by size of bin	SQ	Special Quote, contact Sukup Mfg	*Available on bins up to 105' diameter.
---	-------------------------------	---	-----------------------------------	---------	------------------------	----	----------------------------------	---

## Economical Strength:

Adding stiffeners to a bin allows the use of lighter gauge sidewall sheets without sacrificing structural strength, thereby, making a stiffened bin more economical.

- Provide excellent structural stability against grain, wind and seismic loads.
- Transfer roof loads directly to the foundation, resulting in less stress on the sidewall sheets.
- Sukup Stiffened Bins are the strongest available.
- Available with bolt-on base angle only.
- Patented anchor system makes installation easier.



## Standing Strong:

Sukup farm stiffeners have up to a 42,000 lb. effective load capacity.

- Extra-strong stiffeners are made from high-strength steel formed into a specifically-engineered shape to maximize the strength of the steel. The end result is a stiffener that will stand straight and strong for many years - and bushels - to come.
- The top stiffener is tapered to fit under the bin roof and bolts to the top horizontal bolt hole making a stronger connection.



## We've Got it Covered: Base Stiffeners

Sukup base stiffeners cover the bottom two wall sheets and extend above the horizontal seam for better support and structural integrity. Standard stiffeners are 88" to cover two sheets.

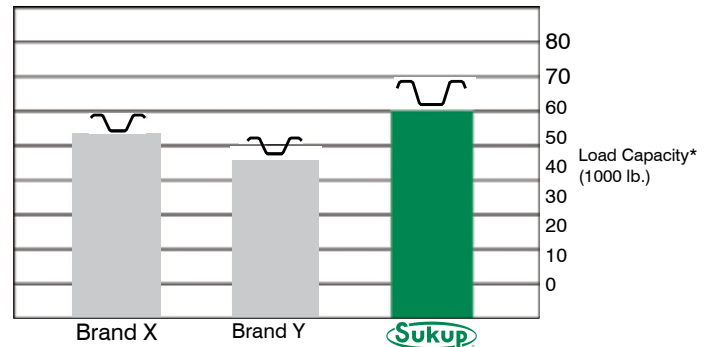




# Commercial Bins

## **Sukup vs. the Competition:** Commercial Stiffeners

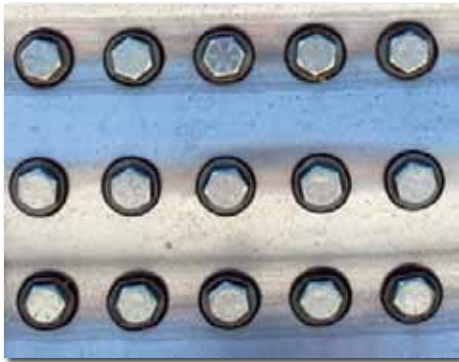
- Not all stiffeners are designed alike, and not all stiffeners perform alike.
- Sukup commercial stiffeners are made from 70,000 psi tensile strength steel.
- Our computer-engineered shape was developed specifically to make them the strongest on the market.
- Our 60,000 lb. effective load capacity shows that we've succeeded in meeting our objective and the chart to the right proves it\*.



\*Effective load carrying capacities of the stiffeners were calculated based on American Iron and Steel Institute (AISI) Cold-Formed Steel Standards with 8 ga. ASTM A653 Grade 50 steel.

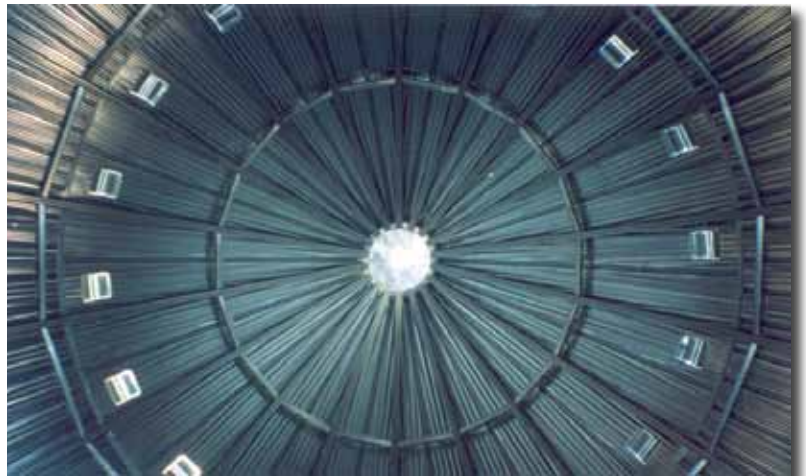
## **Keeping it Together:** Sukup Bolt Patterns

- The bolt patterns and sizes on Sukup commercial bins vary by bin diameter and are engineered to maximize the strength of the connection and form the strongest bond.
- Commercial Bin bolts are JS1000 or equivalent coating, SAE Grade 8.2.



## **15,000 lb. & 30,000 lb. Load:** Commercial Roof Options

- Our 15,000 lb. roof has a similar external roof sheet structure as our standard roof, but has the added support of C-shaped inner rafters and purlins.
- Sukup's 72' - 105' commercial bin roofs have a 30,000 lb. peak load rating with an optional 50,000 lb. rating for 90' and 105' bins (std. on 135' & 156'). Most competing brands max out at a 25,000 lb. load rating.
- The strength of the 30,000 lb. Sukup roof comes from double C-shaped channels forming I-beam rafters with C-shaped purlins. All rafters and purlins are manufactured from minimum 70,000 psi tensile strength steel on the most advanced equipment in the industry. Rafters and purlins on bins up to 90' are single length pieces.



## **Added Safety:** Roof Rings Standard

- Roof rings are standard on all Sukup commercial roofs for added safety during construction and maintenance.
- The number of rings varies depending upon bin diameter.



Commercial Bin Sizes				
Dia.	Max. Capacities Available (Bu.)	Standard Roof Peak Load* (Lbs.)	Optional Roof Peak Load* (Lbs.)	Peak Heights Avail.
36'	31,115 - 59,435	5000	15,000 or 30,000	44' - 77'
42'	42,969 - 107,213	5000	8,000; 15,000 or 30,000	45'11" - 100'11"
48'	56,929 - 140,840	8000	15,000 or 30,000	47'9" - 102'9"
54'	73,000 - 179,272	15,000	30,000	49'2" - 104'2"
60'	91,473 - 225,585	15,000	30,000	51' - 106'1"
72'	135,353 - 324,153	30,000	15,000	55'1" - 110'1"
75'	147,852 - 352,713	30,000	15,000	56' - 111'
78'	160,982 - 382,560	30,000	15,000	56'11" - 111'11"
90'	219,999 - 514,999	30,000	15,000; 50,000 or 100,000	60'8" - 115'8"
105'	309,096 - 710,624	30,000	50,000 or 100,000	65'4" - 120'4"
135'	542,868 - 1,202,618	50,000	100,000	70'11" - 125'11"
156'	754,727 - 1,522,863	50,000	100,000	75'7" - 123'3"

\*Evenly distributed vertical peak load for 40 psf ground snow zone or 90 mph wind zone as defined by ASCE7-05 Code.

### 100,000 lb. Peak Load:

Our 100,000 lb. roof is constructed of I-beam rafters and an extra-heavy peak ring all manufactured here at Sukup Manufacturing Co. using the latest technology.

135' and 156' diameter commercial bins come standard with a 50,000 lb. roof.



Working deck on 50K roof (21' across on 156' bin).



Knot-Passing Pulley, restraint anchor and safety line retrieval line come standard on all Sukup bins with structured roofs. (Certified Safety Line not included.)



## Stronger by Design:

### Sukup Hopper Bottom Bins

Sukup Medium-Duty and Heavy-Duty Hopper Bottom Bins are among the strongest in the industry, with wide corrugations, extra-strong stiffeners and heavy-gauge hopper panels.

- Tank portion features the same quality sidewall construction as standard Sukup Bins, as well as the same extra-strong roof. 44" door is optional on heavy-duty hopper bins.
- Sukup hoppers are made of heavy-gauge, galvanized steel for strength and durability.
- Round-head bolts throughout the hopper portion prevent grain from getting hung-up and bridging.
- Standard hoppers are 45°. 60° hoppers are also available in some sizes.

## Clear It Out: 16" Unload Outlet

Sukup Hopper Bottom Bins are designed to hold free-flowing grains up to 52 lbs/ft<sup>3</sup>, with an unload rate of 9000 bu/hr.

- Rack and pinion roller slide gate, standard on the large, 16" dia. unloading outlet, makes it easier to open and close. Optional chain wheel available for Heavy-Duty Hopper Bins mounted on overhead structures.
- Ample ground clearance to allow for an auger take-up.



# Medium-Duty Hopper Bins (MD)

## Standard:

15' - 21', 3 - 6 rings, 45° hopper

## Available:

12', 3 - 5 rings, 60° hopper

15', 3 - 6 rings, 60° hopper

- May be mounted on overhead super structure.
- Ideal for use as a wet holding tank to feed your Sukup Grain Dryer.
- May be used to store cool, dry grain for an extended period of time.
- Legs are formed in our extra-strong stiffener profile. The legs extend to the bottom two rings, providing additional support for the sidewalls. 12', 15' and 18' dia. bins have three legs per sidewall sheet. 21' dia. bins have four legs per sheet.
- Angle-shaped leg cross bracing and C-shaped leg-to-hopper bracing provide solid support. Cross bracing is located high on the legs to allow easy access to the hopper outlet.
- Panels for the hopper portion of Sukup Medium-Duty Bins attach directly to the sidewall sheets, so there is no ledge to trap grain. Panels bolt together.

## MD Hopper - Bin Specifications

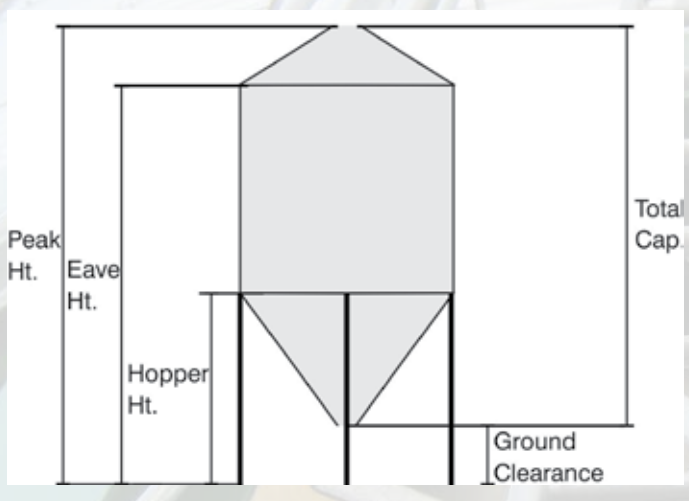
Dia.	Hopper	# of Rings	Total Capacity Bushels	Tons	Eave Ht.	Peak Ht.	Hopper Ht.	Ground Clearance*
12'	60°	3	1350	40	23'11"	26'8"	12'	2'
		4	1699	51	26'7"	29'4"	12'	2'
		5	2049	61	30'4"	33'1"	12'	2'
15'	60°	3	2500	74	25'5"	29'10"	14'4"	2'2½"
		4	3047	90	29'1"	33'6"	14'4"	2'2½"
		5	3593	107	31'9"	37'2"	14'4"	2'2½"
		6	4139	123	26'5"	40'10"	14'4"	2'2½"
15'	45°	3	2224	70	20'6"	24'11"	9'7"	2'2½"
		4	2771	88	24'2"	28'7"	9'7"	2'2½"
		5	3317	105	27'10"	32'3"	9'7"	2'2½"
		6	3863	122	31'6"	35'11"	9'7"	2'2½"
18'	45°	3	3368	107	22'11"	28'3"	12'	2'9¾"
		4	4155	131	26'7"	31'11"	12'	2'9¾"
		5	4942	156	30'3"	35'7"	12'	2'9¾"
		6	5728	181	33'11"	39'3"	12'	2'9¾"
21'	45°	3	4810	152	23'5"	29'8"	12'6"	2'6½"
		4	5881	186	27'1"	33'4"	12'6"	2'6½"
		5	6952	220	30'9"	37'	12'6"	2'6½"
		6	8022	254	34'5"	40'8"	12'6"	2'6½"

Bin capacities and weights are calculated on ASABE S.413.1 Standard with 6% grain compaction.

\* Ground clearance for hopper bins with rack & pinion. For clearance without rack & pinion, add 5" to ground clearance shown.







# Heavy-Duty Hopper Bins (HD)

- May be mounted on overhead super structures for loading of semis or train cars.
- May be used as a working bin. A working bin is defined as refilling 25% or more of the maximum bin capacity more than 12 times a year, where new grain settles for more than 72 hours per occurrence. Working bins require grain to be unloaded by gravity out of the center sump only.
- Can be used to store cool, dry grain for an extended period of time.



## The Right Base for Your Heavy-Duty Hopper

The base for your Sukup Heavy-Duty Hopper Bottom Bin is tailored to the size of the bin and the load capacity required. All base configurations start with 70,000 psi tensile strength steel, wide flange legs. The wide flange (I-beam) construction makes the legs extra-strong and stable, and L-shaped cross-bracing between the legs adds even more stability.



## Exclusive Inner Apron Lets Grain Flow

Sukup Heavy Duty Hopper Bottom Bins feature hopper ring flashing that covers the ledge where the tank and bottom cone join. This flashing prevents grain from accumulating on the ledge and allows grain to flow freely into the hopper.



## HD Hopper - Bin Specifications

Dia.	# of Rings	Total Capacity Bushels	Tons	Eave Ht.	Peak Ht.	Hopper Ht.	Ground Clearance*
15'	3	2224	70	20'9"	25'2"	9'8"	2'6½"
	4	2771	88	24'5"	28'10"	9'8"	2'6½"
	5	3317	105	28'1"	32'6"	9'8"	2'6½"
	6	3863	122	31'9"	36'2"	9'8"	2'6½"
	7	4409	140	35'5"	39'10"	9'8"	2'6½"
	8	4956	157	39'1"	43'6"	9'8"	2'6½/16"
	9	5502	174	42'9"	47'2"	9'8"	2'6½/16"
	10	6048	191	46'5"	50'10"	9'8"	2'6½/16"
	11	6595	209	50'1"	54'6"	9'8"	2'6½/16"
	12	7141	226	53'9"	58'2"	9'8"	2'6½/16"
18'	3	3368	107	22'5"	27'9"	11'4"	2'6⅞"
	4	4155	131	26'1"	31'6"	11'4"	2'6⅞"
	5	4942	156	29'9"	35'1"	11'4"	2'6⅞"
	6	5728	181	33'5"	38'9"	11'4"	2'6⅞"
	7	6515	206	37'1"	42'5"	11'4"	2'6⅞"
	8	7302	231	40'9"	46'1"	11'4"	2'7⅜/16"
	9	8088	256	44'5"	49'9"	11'4"	2'7⅜/16"
	10	8875	281	48'1"	53'5"	11'4"	2'7⅜/16"
	11	9662	306	51'9"	57'1"	11'4"	2'7⅜/16"
	12	10,448	331	55'5"	60'9"	11'4"	2'7⅜/16"
21'	3	4810	152	23'11"	30'2"	12'10"	2'7¾"
	4	5881	186	27'7"	33'10"	12'10"	2'7¾"
	5	6952	220	31'3"	37'6"	12'10"	2'7¾"
	6	8022	254	34'11"	41'2"	12'10"	2'7¾"
	7	9093	288	38'7"	44'10"	12'10"	2'7¾"
	8	10,164	322	42'3"	48'6"	12'10"	2'7⅜/16"
	9	11,235	356	45'11"	52'2"	12'10"	2'7⅜/16"
	10	12,305	389	49'7"	55'10"	12'10"	2'7⅜/16"
	11	13,376	423	53'3"	59'6"	12'10"	2'7⅜/16"
	12	14,447	457	56'11"	63'2"	12'10"	2'7⅜/16"
24'	3	6576	208	25'4"	32'6"	14'3"	2'6¾"
	4	7975	252	29'	36'2"	14'3"	2'6¾"
	5	9373	297	32'8"	39'10"	14'3"	2'6¾"
	6	10,772	341	36'4"	43'6"	14'3"	2'6¾"
	7	12,170	385	40'	47'2"	14'3"	2'6¾"
	8	13,569	429	43'8"	50'10"	14'3"	2'7¼"
	9	14,967	474	47'4"	54'6"	14'3"	2'7¼"
	10	16,366	518	51'	58'2"	14'3"	2'7¼"
	11	17,764	562	54'8"	61'10"	14'3"	2'7¼"
	12	19,163	606	58'4"	65'6"	14'3"	2'7¼"
27'	3	8694	275	26'11"	35'1"	15'10"	2'7¼"
	4	10,464	331	30'7"	38'9"	15'10"	2'7¼"
	5	12,234	387	34'3"	42'5"	15'10"	2'7¼"
	6	14,004	443	37'11"	46'1"	15'10"	2'7¼"
	7	15,774	499	41'7"	49'9"	15'10"	2'7⅞"
	8	17,544	555	45'3"	53'5"	15'10"	2'7⅞"
	9	19,314	611	48'11"	57'1"	15'10"	2'7⅞"
	10	21,084	667	52'7"	60'9"	15'10"	2'7⅞"
	11	22,854	723	56'3"	64'5"	15'10"	2'7⅞"
	12	24,624	779	59'11"	68'1"	15'11"	2'7⅞"
30'	3	11,192	354	28'5"	37'6"	17'4"	2'7¼"
	4	13,377	423	32'1"	41'2"	17'4"	2'7¼"
	5	15,563	493	35'9"	44'10"	17'4"	2'7¼"
	6	17,748	562	39'5"	48'6"	17'4"	2'7¼"
	7	19,933	631	43'1"	52'2"	17'4"	2'7¼"
	8	22,118	700	46'9"	55'10"	17'4"	2'6¾"
	9	24,303	769	50'5"	59'6"	17'4"	2'6¾"
	10	26,489	838	54'1"	63'2"	17'4"	2'6¾"
	11	28,674	907	57'9"	66'10"	17'4"	2'6¾"
	12	30,859	977	61'5"	70'6"	17'4"	2'6¾"
36'	8	33,171	990	49'5"	60'4"	20'	2'6¼"
	9	36,318	1084	53'1"	64'	20'	2'6¼"
	10	39,465	1178	56'9"	67'8"	20'	2'6¼"
	11	42,611	1272	60'5"	71'4"	20'	2'6¼"
	12	45,758	1366	64'1"	75'	20'	2'6¼"
	13	48,905	1460	67'9"	78'8"	20'	2'6¼"
	14	52,052	1554	71'5"	82'4"	20'	2'6¼"
	15	55,199	1648	75'1"	86'	20'	2'6¼"
	16	58,346	1742	78'9"	89'8"	20'	2'6¼"
	17	61,493	1836	82'5"	93'4"	20'	2'6¼"
	18	64,640	1930	86'1"	97'	20'	2'6¼"

Bin capacities and weights are calculated on ASABE S.413.1 Standard with 6% grain compaction.  
\*Ground clearance is with rack & pinion. For clearance without rack & pinion, add 5" to ground clearance shown.



# DRYING, STORAGE and HANDLING SOLUTIONS®

We've spent over 50 years developing innovative, efficient, and reliable products to meet the ever-expanding needs of grain producers. With a full-line of product Solutions®, you need look no further than Sukup for your grain handling, storage, drying, and steel building needs.



**Sukup Manufacturing Co. ■ [www.sukup.com](http://www.sukup.com)**

Box 677 ■ 1555 255th St. ■ Sheffield, IA 50475-0677 ■ ph 641.892.4222  
fx 641.892.4629 ■ [info@sukup.com](mailto:info@sukup.com)

## Distribution Centers

**Arcola, IL 61910**  
980 E. State Rte. 133  
ph 217.268.3026  
[illinois@sukup.com](mailto:illinois@sukup.com)

**Aurora, NE 68818**  
1705 Hwy. 34 E.  
ph 402.694.5922  
[nebraska@sukup.com](mailto:nebraska@sukup.com)

**Cameron, MO 64429**  
7426 NE 352nd St.  
ph 816.649.2226  
[missouri@sukup.com](mailto:missouri@sukup.com)

**Defiance, OH 43512**  
7724 Rte. 66 N.  
ph 419.784.9871  
[ohio@sukup.com](mailto:ohio@sukup.com)

**Jonesboro, AR 72403**  
5917 E. Johnson Ave.  
ph 870.932.7547  
[arkansas@sukup.com](mailto:arkansas@sukup.com)

**Watertown, SD 57201**  
2701 Piper Ave.  
ph 605.882.6697  
[southdakota@sukup.com](mailto:southdakota@sukup.com)