



Commercial Bins



World's Largest Free Span Bins

- Up to 1.5 Million Bushel
- Up to 156' Diameter

Million Bushel Bins



Comm

Safety First - Sukup Safety Features



Sukup Commercial Bins come with a number of safety features including a standard Restraint Anchor (rated for 1800 lbs.) mounted near the manhole for use with a lifeline and safety harness. Starting in 2014, an additional Peak Anchor with rafter bracket for a knot passing pulley will also be available on roofs rated on 15,000 lbs. or greater. Besides these features, there are extensive safety sections at the Sukup website to help owners understand the hazards of grain storage, and replacement shields and decals are available at no charge.

High Strength Steel - Sukup Sidewall Sheets

Sukup uses a minimum 70,000 to 75,000 PSI tensile strength steel to provide better hoop tension load carrying capacity. The 4" wide corrugations on Sukup sidewall sheets create less resistance and friction to allow grain to flow more easily. Sukup sheets are 44" high, so there are fewer rings, seams and bolts than bins with 32" sidewall sheets.



Top Quality Bolts

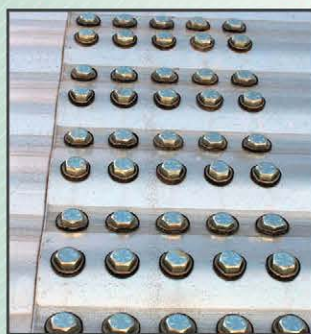
Bolts on Sukup Commercial Bins are SAE Grade 8.2 (the highest standard in the industry) with JS1000™ plating. The SAE Grade 8.2 ensures that Sukup bolts will hold up to the stresses placed on them.

	Proof Load	Yield Strength	Tensile Strength
Bolt Grade	(psi)	(psi)	(psi)
8.2	120,000	130,000	150,000
5	85,000	92,000	120,000
2	55,000	57,000	74,000

Corrosion Protection	Hours to Red Rust
JS1000™	1000
Polyseal	240
Zinc Dichromate	108
Zinc	72

The JS1000™ plating gives longer life for Sukup Commercial Bins.

Optimum Bolt Usage

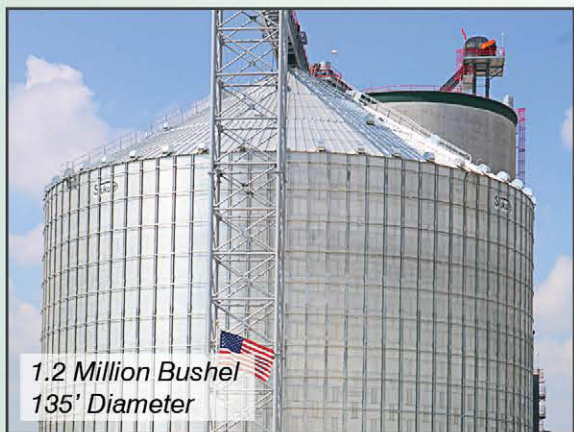


The vertical bolt pattern on Sukup Commercial Bins has been evaluated for optimum performance and convenient erection. Sukup engineers use solid imaging computer design analysis to determine the proper bolt size to ensure the integrity of the seams while minimizing the number of bolts needed in order to speed erection and keep costs in line.



1.5 Million Bushel
156' Diameter

More grain means more bushels, and that means bigger bins. We've answered the call for more storage with our 135' and 156' Commercial Bins. The 135' was the first ever fully-erected free-span bin to hold over one million bushels and the 156' is the largest free span bin in the world. With 1.2 million and 1.5 million bushel capacities respectively, you can maximize your storage space, while minimizing the number of bins.



1.2 Million Bushel
135' Diameter

Sukup million bushel bins also feature a 14' or 20' flat deck around the peak of the bin. This provides more area to attach catwalks and conveyors as well as more room to work, making it safer to service.



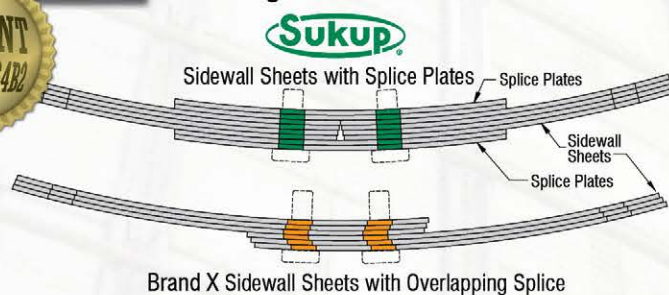
90'-135': 14' Flat Deck
156': 20' Flat Deck

Commercial Bins *[Better By Design™]*

Laminated Splice Plate



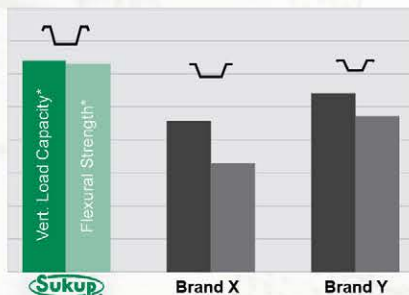
On larger commercial bins, our patented laminated splice plates reduce the risk of bolt shear. Instead of overlapping the edges of laminated sidewall sheets, we use a butt joint and specially designed splice plates. The design makes the bin easier to erect because the holes are properly aligned and eliminates gaps that can lead to leaking.



Commercial Stiffeners

- Sukup vs. The Competition

Not all stiffeners are designed alike, and not all stiffeners perform alike. Sukup commercial stiffeners are made from 70,000 PSI minimum tensile strength galvanized steel and were computer-engineered specifically to make them extra strong.



* Effective load carrying capacities and flexural strength of the stiffeners were calculated based on American Iron and Steel Institute (AISI) Cold-Formed Steel Standards with 8 ga. ASTM A653 Grade 50 Steel.



Sukup stiffeners are externally-mounted only. External stiffeners provide excellent support and prevent the accumulation of grain and the resulting spoilage that can occur with internal stiffeners. Wind rings are used to provide greater rigidity to Sukup

Single Pass Sweep



60' diameter and smaller and 135' diameter and larger Sukup Commercial Bins are designed to be unloaded in a single pass. Anchors can also be added to allow it in all other diameter bins.



Easy Access

Single Ring Door

A 44", single-ring door is available on shorter Sukup Commercial Bins. It features Hammer Head latches and the inner panels lay flat against the sidewall when open.



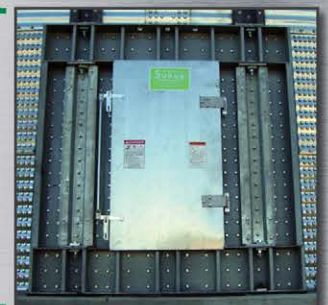
Round Door

Sukup's taller Commercial Bins are equipped with a 26.5" round door; the largest of its type in the industry.



Walk-Through Door

A 60" walk-through door is also available as a convenient option to help enter and exit with ease.



Skid Steer Door

An optional Skid Steer door is also available for even greater access.



Side Draw System



Sukup side draw systems are also an option on Commercial Bins. (As with any side draw, the grain must be emptied to a uniform height on the sidewall before refilling. Use only Sukup designed side draw units with Sukup Commercial Bins. Never add a side draw system to an existing bin.)

Eugene Sukup started Sukup Manufacturing Co. in 1963. With the help of his two sons, Charles and Steve, he has grown this family-owned business into a leader in the grain storage and handling industry.



Sukup invested in the newest, most advanced bin production line in the world. Using the most accurate roll-forming machinery available results in great fitting, quality bins, that are efficiently and economically produced. That is why they offer a 5-year limited warranty.



Built to

Exceptional Peak Load Rating



Sukup offers commercial roofs with 15,000, 30,000 or 50,000 lb. peak load ratings. Roof ratings are pounds evenly distributed on peak ring as pure vertical load with uniformly distributed roof snow load calculated from 40 psf ground snow zone or 90 mph wind zone as defined by ASCE7-05 Code.

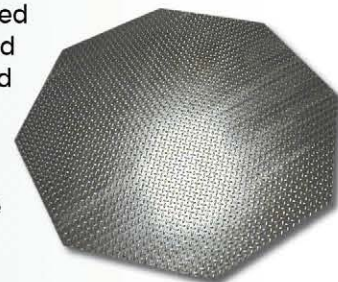
30,000 lb. and 50,000 lb. Roofs



The strength of the 30,000 lb. Sukup roof comes from double C-shaped channels forming I-beam rafters with C-shaped purlins. Rafters and purlins are manufactured from 70,000 psi tensile strength galvanized steel. The rafters in the 156' bin are constructed with 65,000 psi tensile strength I-beams.

Sukup Commercial Peak Lids

Sukup commercial roofs come equipped with a 1/4" thick, 60" diameter, diamond deck steel peak lid that provides a solid base for conveying equipment or fill spouts. The diamond decking provides a non-slip surface for improved worker safety. The lid can be cut on-site to match your conveyor or down spout requirements.



Roof Rings



Roof rings are standard on all Sukup commercial roofs. The number of rings varies depending upon bin diameter.

be the Best *[from Base to Peak Lid]*

Rigidized Roof Panels

Sukup's specially-designed roof panels are formed on a fully-automated, highly-advanced, single-pass roll forming system. This system maintains tight tolerances, ensuring an accurate fit for easier assembly and a tight seal between panels. The roll-forming process includes a step to rigidize the full length of the roof panels every 4" to increase the stiffness of the panels, making them easier to handle. Sukup introduced their bins with the deepest roof ribs (3") incorporating multiple bends, giving



added strength to the roof panels. Sukup even went the extra step of making the ribs two different widths for a better overlap and fit. The inner or lower rib is slightly smaller than the upper, allowing the sheets to nest properly.

Ladders, Cages, and Platforms

Sukup has available ladders, cages, landing platforms and stairs. Sukup ladders feature continuous handrails and rungs that are securely fastened, so they can't turn. Cages are also available for outside ladders for increased safety.



Proper Ventilation - Sukup Roof Vents

Proper ventilation is an important part of maintaining grain quality. Sukup offers 18" fixed screen and 24" power roof exhausters.

Exclusive 18" poly vents with hinged screen (patent pending) are extremely durable and feature a debris deflector to prevent damage to roof sheets from accumulating fines and trash.



Sukup roof sheets are available pre-punched for 18" vents. Pre-punching the vent holes produces an extra-tall (1 1/8") extruded lip that works as a barrier, preventing moisture from leaking into the tank through the vent opening.



Sukup Power Roof Exhausters feature a totally enclosed 1750 RPM motor, fan blade, shutters, and galvanized housing for long lasting protection from the elements. We also offer an optional screen kit. Tapered poly eave vents are also available.



Commercial Bin Sizes

Dia.	Peak Heights Available	Max. Cap. Available (Bu)	Standard Roof Peak Load	Optional Roof Peak Load
42'	45'11" - 100'11"	42,969 - 107,213	5,000	15,000 or 30,000
48'	47'9" - 102'9"	56,929 - 140,840	8,000	15,000 or 30,000
54'	49'2" - 104'2"	73,072 - 179,272	15,000	30,000
60'	51' - 106'1"	91,423 - 222,585	15,000	30,000
72'	55'1" - 110'1"	135,353 - 324,153	30,000	15,000
75'	56' - 111'	147,582 - 352,713	30,000	15,000
78'	56'11" - 111'11"	160,982 - 382,560	30,000	15,000
90'	60'8" - 115'8"	219,999 - 514,999	30,000	15,000 or 50,000
105'	65'4" - 120'4"	309,096 - 710,624	30,000	50,000
135'	70'11" - 125'11"	542,868 - 1,206,618	50,000	-
156'	75'7" - 123'3"	754,727 - 1,522,863	50,000	-

Eave Heights available: 9-24 rings, 33'1" - 88'1" (156': 9-22 rings, 33'1" - 80'9")

Foundation specifications must be designed by a qualified engineer based on local soil conditions. Soil boring test must be done by a competent engineering firm and foundation construction must be done by a knowledgeable concrete contractor.



Commercial

# of Rings	9	10	11	12	13	14	15	16	17	18	19	20	21	22	23	24
Eave Ht. (ft.)	33'1"	36'9"	40'5"	44'1"	47'9"	51'5"	55'1"	58'9"	62'5"	66'1"	69'9"	73'5"	77'1"	80'9"	84'5"	88'1"
Eave Ht (Mtr)	10.08	11.20	12.32	13.44	14.55	15.67	16.79	17.91	19.02	20.14	21.26	22.38	23.50	24.61	25.73	26.85

Note: Taller eave heights are available in some situations. Contact Sukup Manufacturing for more details.


Model #	Max. Cap. Bu.*	Peak Height				Metric Tons**		
		5 & 8 K		15 & 30 K				
		Feet	Meters	Feet	Meters	Wheat	Corn	Rice
4209	42,969	45'11"	14.00	45'6"	13.87	1166	1090	876
4210	47,252	49'7"	15.11	49'2"	14.99	1282	1199	963
4211	51,534	53'3"	16.23	52'10"	16.10	1399	1308	1051
4212	55,817	56'11"	17.35	56'6"	17.22	1515	1417	1138
4213	60,100	60'7"	18.47	60'2"	18.34	1631	1525	1225
4214	64,383	64'3"	19.58	63'10"	19.46	1747	1633	1312
4215	68,666	67'11"	20.70	67'6"	20.57	1864	1743	1400
4216	72,949	71'7"	21.82	71'2"	21.69	1980	1851	1487
4217	77,232	75'3"	22.94	74'10"	22.81	2096	1960	1574
4218	81,515	78'11"	24.05	78'6"	23.93	2212	2068	1661
4219	85,798	82'7"	25.17	82'2"	25.05	2329	2178	1749
4220	90,081	86'3"	26.29	85'10"	26.16	2445	2286	1836
4221	94,364	89'11"	27.41	89'6"	27.28	2561	2395	1923
4222	98,647	93'7"	28.52	93'2"	28.40	2677	2503	2010
4223	102,930	97'3"	29.64	96'10"	29.51	2794	2612	2098
4224	107,213	100'11"	30.76	100'6"	30.63	2910	2721	2185
4809	56,929	47'9"	14.55	47'5"	14.43	1545	1445	1160
4810	62,523	51'5"	15.67	51'	15.54	1697	1587	1274
4811	68,117	55'1"	16.79	54'8"	16.66	1849	1729	1389
4812	73,711	58'9"	17.91	58'4"	17.78	2001	1871	1503
4813	79,305	62'5"	19.02	62'	18.90	2152	2012	1616
4814	84,899	66'1"	20.14	65'8"	20.02	2304	2154	1730
4815	90,494	69'9"	21.26	69'4"	21.13	2456	2296	1844
4816	96,088	73'5"	22.38	73'	22.25	2608	2438	1959
4817	101,682	77'1"	23.50	76'8"	23.37	2760	2581	2073
4818	107,276	80'9"	24.61	80'4"	24.49	2912	2723	2187
4819	112,870	84'5"	25.73	84'	25.60	3063	2864	2300
4820	118,464	88'1"	26.85	87'8"	26.72	3215	3006	2412
4821	124,058	91'9"	27.97	91'4"	27.84	3367	3148	2529
4822	129,652	95'5"	29.08	95'	28.96	3519	3290	2643
4823	135,246	99'1"	30.20	98'8"	30.07	3671	3432	2757
4824	140,840	102'9"	31.32	102'4"	31.19	3823	3575	2871
5409	73,072	49'7"	15.11	49'2"	14.99	1983	1854	1489
5410	80,152	53'3"	16.23	52'10"	16.10	2175	2034	1633
5411	87,232	56'11"	17.35	56'6"	17.22	2368	2214	1778
5412	94,312	60'7"	18.47	60'2"	18.34	2560	2394	1923
5413	101,392	64'3"	19.58	63'10"	19.46	2752	2573	2067
5414	108,472	67'11"	20.70	67'6"	20.57	2944	2753	2211
5415	115,552	71'7"	21.82	71'2"	21.69	3136	2932	2355
5416	122,632	75'3"	22.94	74'10"	22.81	3328	3112	2499
5417	129,712	78'11"	24.05	78'6"	23.93	3521	3292	2644
5418	136,792	82'7"	25.17	82'2"	25.04	3713	3472	2788
5419	143,872	86'3"	26.29	85'10"	26.16	3905	3651	2933
5420	150,952	89'11"	27.41	89'6"	27.28	4097	3831	3077
5421	158,032	93'7"	28.52	93'2"	28.40	4289	4010	3221
5422	165,112	97'3"	29.64	96'10"	29.51	4481	4190	3365
5423	172,192	100'11"	30.76	100'6"	30.63	4674	4370	3510
5424	179,272	104'7"	31.88	104'2"	31.75	4866	4550	3654



Model #	Max. Cap. Bu.*	Peak Height				Metric Tons**		
		5 & 8 K		15 & 30 K				
		Feet	Meters	Feet	Meters	Wheat	Corn	Rice
6009	91,473	51'6"	15.70	51'	15.54	2483	2322	1865
6010	100,214	55'2"	16.81	54'9"	16.69	2720	2543	2043
6011	108,955	58'10"	17.93	58'5"	17.81	2957	2765	2221
6012	117,696	62'6"	19.05	62'1"	18.92	3194	2986	2399
6013	126,436	66'2"	20.17	65'9"	20.04	3432	3209	2577
6014	135,177	69'10"	21.29	69'5"	21.16	3669	3431	2755
6015	143,918	73'6"	22.40	73'1"	22.28	3906	3652	2933
6016	152,659	77'2"	23.52	76'9"	23.39	4143	3874	3111
6017	161,399	80'10"	24.64	80'5"	24.51	4381	4096	3290
6018	170,140	84'6"	25.76	84'1"	25.63	4618	4318	3468
6019	178,881	88'2"	26.87	87'9"	26.75	4855	4539	3646
6020	187,622	91'10"	27.99	91'5"	27.86	5092	4761	3824
6021	196,362	95'6"	29.11	95'1"	28.98	5330	4984	4003
6022	205,103	99'2"	30.23	98'9"	30.10	5567	5205	4181
6023	213,844	102'10"	31.34	102'5"	31.22	5804	5427	4359
6024	222,585	106'6"	32.46	106'1"	32.33	6041	5648	4537
7209	135,353	-	-	55'1"	16.79	3747	3435	2759
7210	147,939	-	-	58'9"	17.91	4096	3754	3016
7211	160,526	-	-	62'5"	19.02	4444	4074	3272
7212	173,113	-	-	66'1"	20.14	4792	4393	3529
7213	185,699	-	-	69'9"	21.26	5140	4713	3785
7214	198,286	-	-	73'5"	22.38	5489	5032	4042
7215	210,873	-	-	77'1"	23.50	5837	5351	4298
7216	223,456	-	-	80'9"	24.61	6185	5671	4555
7217	236,046	-	-	84'5"	25.73	6533	5990	4811
7218	248,633	-	-	88'1"	26.85	6882	6310	5068
7219	261,219	-	-	91'9"	27.97	7230	6629	5325
7220	273,806	-	-	95'5"	29.08	7578	6949	5581
7221	286,393	-	-	99'1"	30.20	7926	7268	5838
7222	298,979	-	-	102'9"	31.32	8274	7587	6094
7223	311,566	-	-	106'5"	32.44	8623	7907	6351
7224	324,153	-	-	110'1"	33.55	8971	8226	6607
7509	147,852	-	-	56'	17.07	4013	3752	3014
7510	161,509	-	-	59'8"	18.19	4384	4099	3292
7511	175,167	-	-	63'4"	19.30	4754	4445	3570
7512	188,824	-	-	67'	20.42	5125	4792	3849
7513	202,482	-	-	70'8"	21.54	5496	5139	4127
7514	216,139	-	-	74'4"	22.66	5866	5485	4405
7515	229,796	-	-	78'	23.77	6237	5832	4684
7516	243,454	-	-	81'8"	24.89	6608	6178	4963
7517	257,111	-	-	85'4"	26.01	6978	6524	5240
7518	270,769	-	-	89'	27.13	7349	6871	5519
7519	284,426	-	-	92'8"	28.24	7720	7218	5798
7520	298,084	-	-	96'4"	29.36	8091	7565	6076
7521	311,741	-	-	100'	30.48	8461	7911	6354
7522	325,398	-	-	103'8"	31.60	8832	8258	6633
7523	339,056	-	-	107'4"	32.72	9203	8605	6911
7524	352,713	-	-	111'	33.83	9573	8951	7189

Bins [Specifications]

Model #	Max. Cap. Bu.*	Peak Height				Metric Tons**		
		15 & 30 K		50 K				
		Feet	Meters	Feet	Meters	Wheat	Corn	Rice
7809	160,982	56'11"	17.35	-	-	4457	4085	3281
7810	175,754	60'7"	18.47	-	-	4866	4460	3582
7811	190,526	64'3"	19.58	-	-	5275	4835	3884
7812	205,298	67'11"	20.70	-	-	5683	5210	4185
7813	220,078	71'7"	21.82	-	-	6092	5585	4486
7814	234,841	75'3"	22.94	-	-	6501	5960	4787
7815	249,613	78'11"	24.05	-	-	6909	6335	5088
7816	264,385	82'7"	25.17	-	-	7318	6709	5389
7817	279,157	86'3"	26.29	-	-	7727	7084	5690
7818	293,929	89'11"	27.41	-	-	8135	7459	5991
7819	308,701	93'7"	28.52	-	-	8544	7834	6292
7820	323,473	97'3"	29.64	-	-	8953	8209	6594
7821	338,244	100'11"	30.76	-	-	9361	8584	6895
7822	353,016	104'7"	31.88	-	-	9770	8959	7196
7823	367,788	108'3"	32.99	-	-	10,179	9334	7497
7824	382,560	111'11"	334.11	-	-	10,588	9708	7798
9009	219,999	60'8"	18.49	56'2"	17.12	5971	5583	4484
9010	239,665	64'4"	19.61	59'10"	18.24	6505	6082	4885
9011	259,332	68'	20.73	63'6"	19.35	7039	6581	5286
9012	278,999	71'8"	21.84	67'2"	20.47	7573	7081	5687
9013	298,666	75'4"	22.96	70'10"	21.59	8106	7579	6088
9014	318,332	79'	24.08	74'6"	22.71	8640	8078	6489
9015	337,999	82'8"	25.20	78'2"	23.83	9174	8578	6890
9016	357,666	86'4"	26.31	81'10"	24.94	9708	9077	7291
9017	377,332	90'	27.43	85'6"	26.06	10,241	9575	7691
9018	396,999	93'8"	28.55	89'2"	27.18	10,775	10,075	8092
9019	416,666	97'4"	29.67	92'10"	28.30	11,309	10,574	8493
9020	436,332	101'	30.78	96'6"	29.41	11,843	11,073	8894
9021	455,999	104'8"	31.90	100'2"	30.53	12,377	11,572	9295
9022	475,666	108'4"	33.02	103'10"	31.65	12,910	12,071	9695
9023	495,332	112'	34.14	107'6"	32.77	13,444	12,570	10,096
9024	514,999	115'8"	35.26	111'2"	33.88	13,978	13,069	10,497
10509	309,096	65'4"	19.91	60'9"	18.52	8389	7844	6300
10510	335,864	69'	21.03	64'5"	19.63	9116	8523	6846
10511	362,633	72'8"	22.15	68'1"	20.75	9843	9203	7392
10512	389,401	76'4"	23.27	71'9"	21.87	10,569	9882	7937
10513	416,170	80'	24.38	75'5"	22.99	11,296	10,562	8483
10514	442,938	83'8"	25.50	79'1"	24.10	12,022	11,241	9029
10515	469,707	87'4"	26.62	82'9"	25.22	12,749	11,920	9574
10516	496,476	91'	27.74	86'5"	26.34	13,475	12,599	10,120
10517	523,244	94'8"	28.85	90'1"	27.46	14,202	13,279	10,666
10518	550,013	98'4"	29.97	93'9"	28.58	14,928	13,958	11,211
10519	576,781	102'	31.09	97'5"	29.69	15,655	14,637	11,757
10520	603,550	105'8"	32.21	101'1"	30.81	16,381	15,316	12,302
10521	630,318	109'4"	33.32	104'9"	31.93	17,108	15,996	12,848
10522	657,087	113'	34.44	108'5"	33.05	17,835	16,676	13,394
10523	683,855	116'8"	35.56	112'1"	34.16	18,561	17,355	13,939
10524	710,624	120'4"	36.68	115'9"	35.28	19,288	18,034	14,485

Model #	Max. Cap. Bu.*	Peak Height				Metric Tons**		
		15 & 30 K		50 K				
		Feet	Meters	Feet	Meters	Wheat	Corn	Rice
13509	542,868	-	-	70'11"	21.62	14,734	13,840	11,072
13510	587,118	-	-	74'7"	22.73	15,935	14,964	11,971
13511	631,368	-	-	78'3"	23.85	17,136	16,087	12,870
13512	675,618	-	-	81'11"	24.97	18,338	17,211	13,769
13513	719,868	-	-	86'7"	26.39	19,539	18,334	14,668
13514	764,118	-	-	89'3"	27.20	20,740	19,458	15,566
13515	808,368	-	-	92'11"	28.32	21,941	20,582	16,465
13516	852,618	-	-	96'7"	29.44	23,142	21,705	17,364
13517	896,868	-	-	100'3"	30.56	24,343	22,829	18,263
13518	941,118	-	-	103'11"	31.67	25,544	23,952	19,162
13519	985,368	-	-	107'7"	32.79	26,745	25,076	20,061
13520	1,029,618	-	-	111'3"	33.91	27,946	26,199	20,960
13521	1,073,868	-	-	114'11"	35.03	29,147	27,323	21,858
13522	1,118,118	-	-	118'7"	36.14	30,348	28,447	22,757
13523	1,162,368	-	-	122'3"	37.26	31,549	29,570	23,656
13524	1,206,618	-	-	125'11"	38.38	32,750	30,694	24,555
15609	754,727	-	-	75' 7"	23.04	20,485	19,204	15,363
15610	813,814	-	-	79' 3"	24.16	22,088	20,708	16,566
15611	872,901	-	-	82' 11"	25.27	23,692	22,211	17,769
15612	931,989	-	-	86' 7"	26.39	25,296	23,715	18,972
15613	991,076	-	-	90' 3"	27.51	26,900	25,218	20,175
15614	1,050,164	-	-	93' 11"	28.63	28,503	26,722	21,377
15615	1,109,251	-	-	97' 7"	29.74	30,107	28,225	22,580
15616	1,168,339	-	-	101' 3"	30.86	31,711	29,729	23,789
15617	1,227,426	-	-	104' 11"	31.98	33,314	31,232	24,986
15618	1,286,514	-	-	108' 7"	33.10	34,918	32,736	26,189
15619	1,345,601	-	-	112' 3"	34.21	36,522	34,239	27,391
15620	1,404,689	-	-	115'11"	35.33	38,126	35,743	28,594
15621	1,463,776	-	-	119' 7"	36.45	39,729	37,246	29,797
15622	1,522,863	-	-	123' 3"	37.57	41,333	38,750	31,000


DANGER! DO NOT ENTER BIN!

If you must enter the bin:
Follow all applicable safety regulations. Shut off and lock out all power. Station another person outside the bin. Use a safety harness and safety line.

Purchase ladder and safety cages and use a safety harness. Maintain secure hand and foot hold when climbing. Metal is slippery when wet. Never carry items while climbing on bin.

Failure to heed these warnings will result in serious injury or death.

Sukup Manufacturing Co. provides this information to assist you in choosing the optimal equipment for your situation. Many factors, such as grain variety, maturity levels, cleanliness of the grain, various weather conditions, etc., can affect the performance of agricultural equipment and your results may vary. Thus, this information is not a guarantee of product specifications or performance. Based on these factors, Sukup specifications should only be used as estimates, and not as a warranty, expressed or implied, of how a particular Sukup unit will perform under your operating conditions. Because we are continuously improving Sukup products, changes may occur that may not be reflected in the specifications. Sukup Commercial Bins are designed for storage of free-flowing grain.

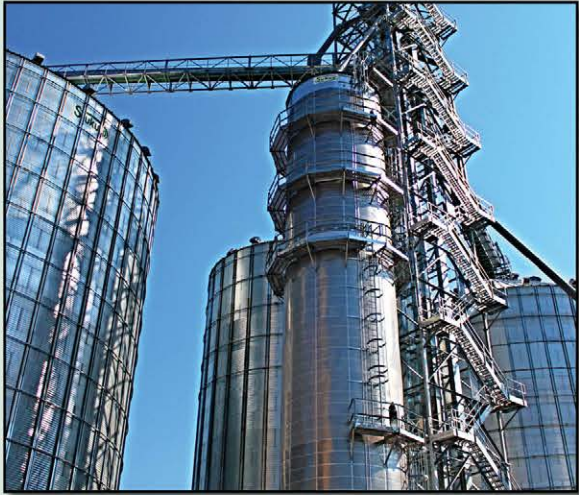
Note: Model # indicates bin diameter (in feet) and number of rings.

* Max capacities are based on bins with no plenum and grain peaked at 28° angle of repose with 6% compaction.

** Tonnage based on 6% compaction and the following grain densities: Wheat: 772 kg/m³ (48 lbs/ft³), Corn: 721 kg/m³ (45 lbs/ft³), Rice: 580 kg/m³ (36 lbs/ft³).

Sukup Tower Dryers

- 12', 18', 24' Diameters
- 46' - 120' Heights
- Dry up to 7000 bu/hr.
- Positive unloading system removes grain from the dryer at a rate based on the grain temperature as it enters the cooling portion.



Commercial Fans

Sukup Fans are #1 in the industry! Sukup is tops in performance and reliability. Centrifugal fans available up to 60 hp. Axial fans available up to 44".



Sukup Hopper Bins

- 15' - 36' diameter tanks available up to 12-rings.
- Capacities from 2200 bu. to 44,500 bu.
- 45° hopper.
- Exclusive inner apron on heavy-duty hoppers prevents grain from accumulating at the tank/hopper seam and allows grain to flow freely into the hopper.

Material Handling

Drag Conveyors

We're making it easier and more cost-effective to handle grain. Sukup conveyors are constructed with heavy-gauge, galvanized steel. 1/2" UHMW flights on all conveyors prevent steel-to-steel contact. Removeable shaft, sprocket and bearings make it easy to maintain your Sukup conveyor. Optional abrasion-resistant steel liners guarantee your investment will last for years to come.



Bucket Elevators

Sukup Bucket Elevators give you the capacity for expansion. Our bucket elevators have UHMW seals on all shafts, durable SOFR rubber belting, heavy-gauge trunking and heavy-duty angle iron framework at the head and boot sections to add strength. The low-impact elevator head shape minimizes the cracking and damaging of grain. Additionally, Sukup offers what our competitors will not; a bucket elevator built to your specifications.



Sukup Manufacturing Co. ■ www.sukup.com

Box 677 ■ 1555 255th St. ■ Sheffield, IA 50475-0677
ph 641.892.4222 ■ fx 641.892.4629 ■ email info@sukup.com

Distribution Centers

Arcola, IL 61910
980 E. State Rte. 133
ph 217.268.3026
fx 217.268.3522

Aurora, NE 68818
1705 Hwy. 34 E.
ph 402.694.5922
fx 402.694.5921

Cameron, MO 64429
7426 NE 352nd St.
ph 816.649.2226
fx 816.649.2225

Defiance, OH 43512
7724 Rte. 66 N.
ph 419.784.9871
fx 419.784.9872

Jonesboro, AR 72403
5917 E. Johnson Ave.
ph 870.932.7547
fx 870.933.8946

Watertown, SD 57201
2701 Piper Ave.
ph 605.882.6697
fx 605.884.0467